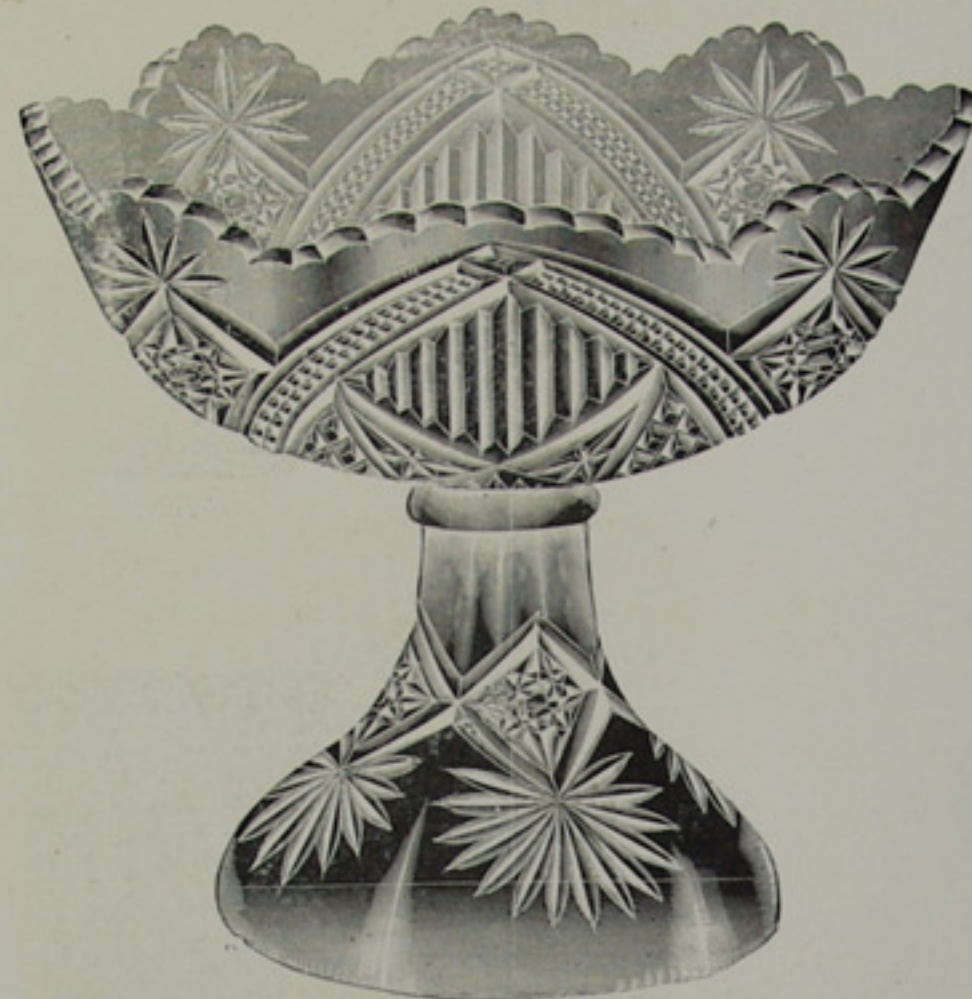


# Lone Star Design.

SCALE, HALF SIZE.



5 in., 6 in., 7 in. and 8 in. Bowl and Cover.



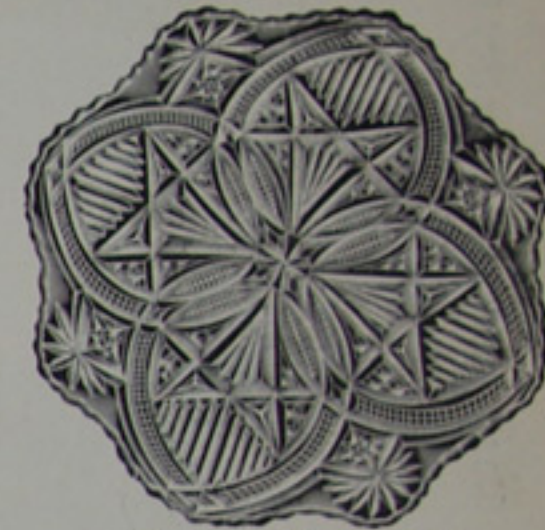
5 in., 6 in., 7 in. and 8 in. Footed Bowl.



8 oz. Oil.



Tall Celery.



5 1/2 in. and 6 1/2 in. Plate.  
Also make 10 and 12 in.

# Maypole Design.

SCALE HALF SIZE.



Sugar and Cover.



Butter and Cover.



Cream.



Spoon.



Molasses Can, N. T. or T. T.



Jug.

This document is a valuable resource for use in the study of glass design. Reproduction for commercial use is strictly prohibited.

# Maypole Design.

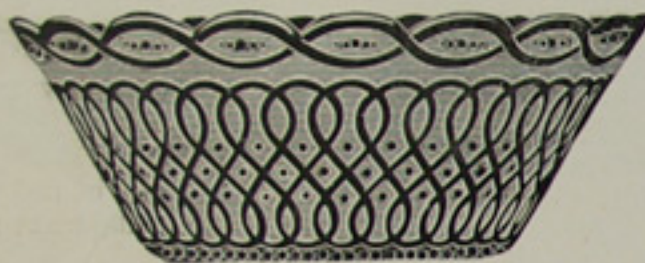
SCALE, HALF SIZE.



4 in. Round Nappy.



4½ in. Round Nappy.



6 in. Round Nappy.



8 in. Round Nappy.



7 and 8 in. Ovals.



Pickle.



Tumbler.



Wine.



Duster, Salt or Pepper, T. T. or N. T.



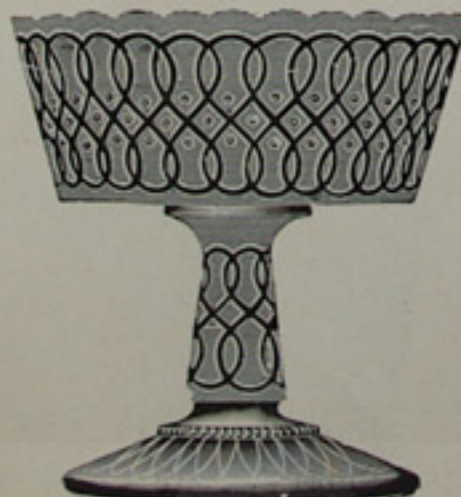
5 oz. Oil.



Goblet.



Sugar Duster, T. T. or N. T.



4½ in. Footed Jelly.



7 in. Bowl.



10 in. Bowl Salver.

National Glass Company, Operating McKee & Bros. Glass Works, Jeannette, Pa.

This document is available for personal use only. Reproduction for commercial use is strictly prohibited.