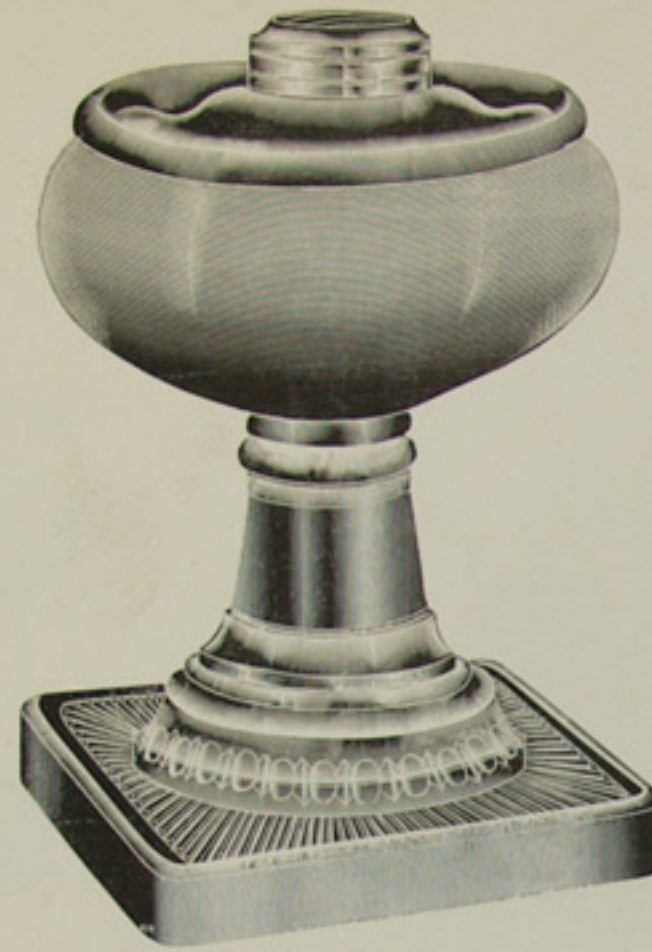


ROMAN LAMPS.

SCALE, HALF SIZE.



O Stand Lamp.
Height, 8½ in. Diameter of Foot, 5 in.



Sewing Lamp. No. 2 Collar.
Height, 8½ in. Diameter of Foot, 7 in.



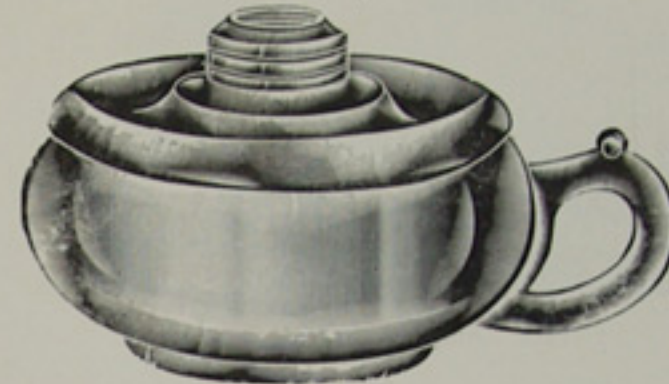
Nutmeg Hand Lamp.



O Footed Hand Lamp.
Height, 5¼ in. Diameter of Foot, 4 in.



O Hand Lamp.



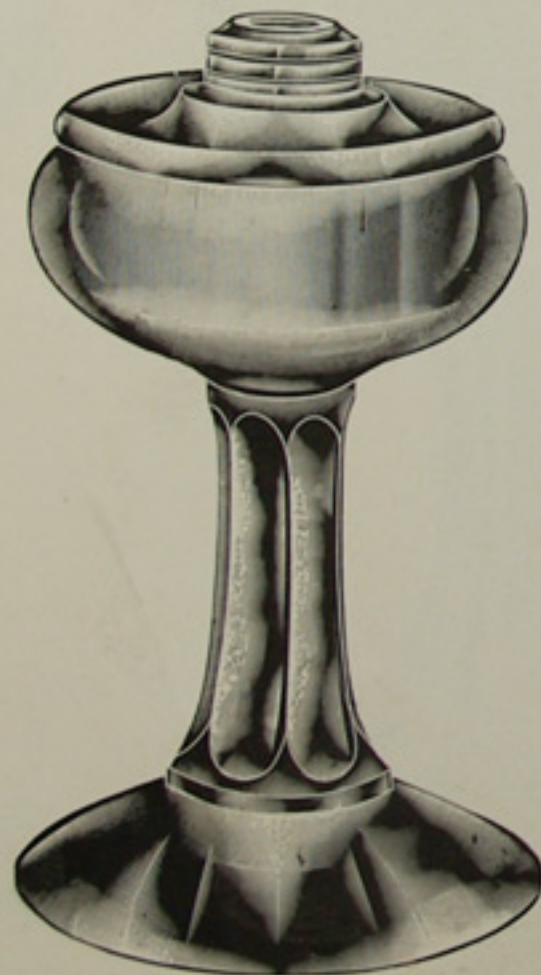
I Hand Lamp.



I Footed Hand Lamp.
Height, 5¼ in. Diameter of Foot, 4¾ in.



A Stand Lamp.
Height, 9 in. Diameter of Foot, 5½ in.



B Stand Lamp. No. 1 or 2 Collar.
Height, 9¾ in. Diameter of Foot, 5½ in.



C Stand Lamp. No. 1 or 2 Collar.
Height, 10½ in.; Diameter of Foot, 5½ in.



D Stand Lamp. No. 2 Collar.
Height, 10¾ in. Diameter of Foot, 6¼ in.



E Stand Lamp. No. 2 Collar.
Height, 11¼ in. Diameter of Foot, 6¼ in.

National Glass Company, Operating McKee & Bros. Glass Works, Jeannette, Pa.

This document is available for personal use only. Reproduction for commercial use is strictly prohibited.