

CO-OPERATIVE FLINT GLASS COMPANY
BEAVER FALLS, PA.
 Circa 1918

No. 375 Pattern

168

9 oz. Goblet
 12 dozen in barrel
 Gross weight of barrel 116 lbs.

8 in. Pickle
 22 dozens in barrel
 Gross weight of barrel 170 lbs.

5 in. Bowl
 3 1/2 dozen in barrel
 Gross weight of barrel 82 lbs.

5 in. Bowl and Cover
 3 dozen in barrel
 Gross weight of barrel 96 lbs.

Molasses
 10 dozen in barrel
 Gross weight of barrel 110 lbs.

Small Jug—36 oz.
 3 dozen in barrel
 Gross weight of barrel 110 lbs.

CR-19

Assortment of Co-Op's No. 375 pattern known today as DEWBERRY. The molds were also used by Phoenix Glass Company for a line of milk glass in the late 1930's, and again later the molds were sold to Kemple.

No. 323 Pattern



Pickle
20 dozen in barrel
Gross weight of barrel 150 lbs.



3 oz. Custard
30 dozen in barrel
Gross weight of barrel 160 lbs.



Salt and Pepper
40 dozen in barrel
Gross weight of barrel 140 lbs.



Oil
12 dozen in barrel
Gross weight of barrel 150 lbs.



7 in. Bowl and Cover
15 dozen in barrel
Gross weight of barrel 150 lbs.



8 1/2 oz. Goblet
12 dozen in barrel
Gross weight of barrel 110 lbs.



2 1/2 oz. Wine
45 dozen in barrel
Gross weight of barrel 155 lbs.



Cordial
120 dozen in barrel
Gross weight of barrel 200 lbs.



10 oz. Mellasses Can
10 dozen in barrel
Gross weight of barrel 110 lbs.

CR-20 Assortment of Co-Op's No. 323, known today as LATTICE LEAF. Sometimes found with rose-staining. It is rare in ruby-stained.

20th Century Pattern



Butter and Cover
5 dozen in barrel
Gross weight of barrel 150 lbs.



Spoon
11 dozen in barrel
Gross weight of barrel 155 lbs.



Cream
10 dozen in barrel
Gross weight of barrel 160 lbs.



Sugar and Cover
7 dozen in barrel
Gross weight of barrel 165 lbs.

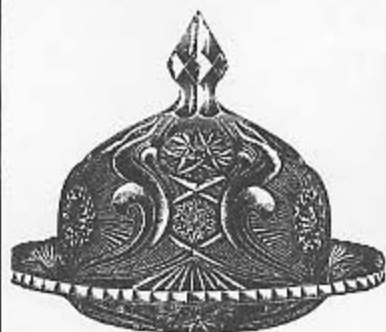


9 oz. Tumbler
18 dozen in barrel
Gross weight of barrel 165 lbs.



1/2 Gallon Jug Six Hardle
2 dozen in barrel
Gross weight of barrel 145 lbs.

CR-21 Co-Op's TWENTIETH CENTURY which was also made in a variant with thumbprints amidst the panels.



Butter and Cover
5 dozen in barrel
Gross weight of barrel 153 lbs.



Cream
9 dozen in barrel
Gross weight of barrel 158 lbs.



Tumbler
15 dozen in barrel
Gross weight of barrel 150 lbs.



Sugar and Cover
7 dozen in barrel
Gross weight of barrel 150 lbs.

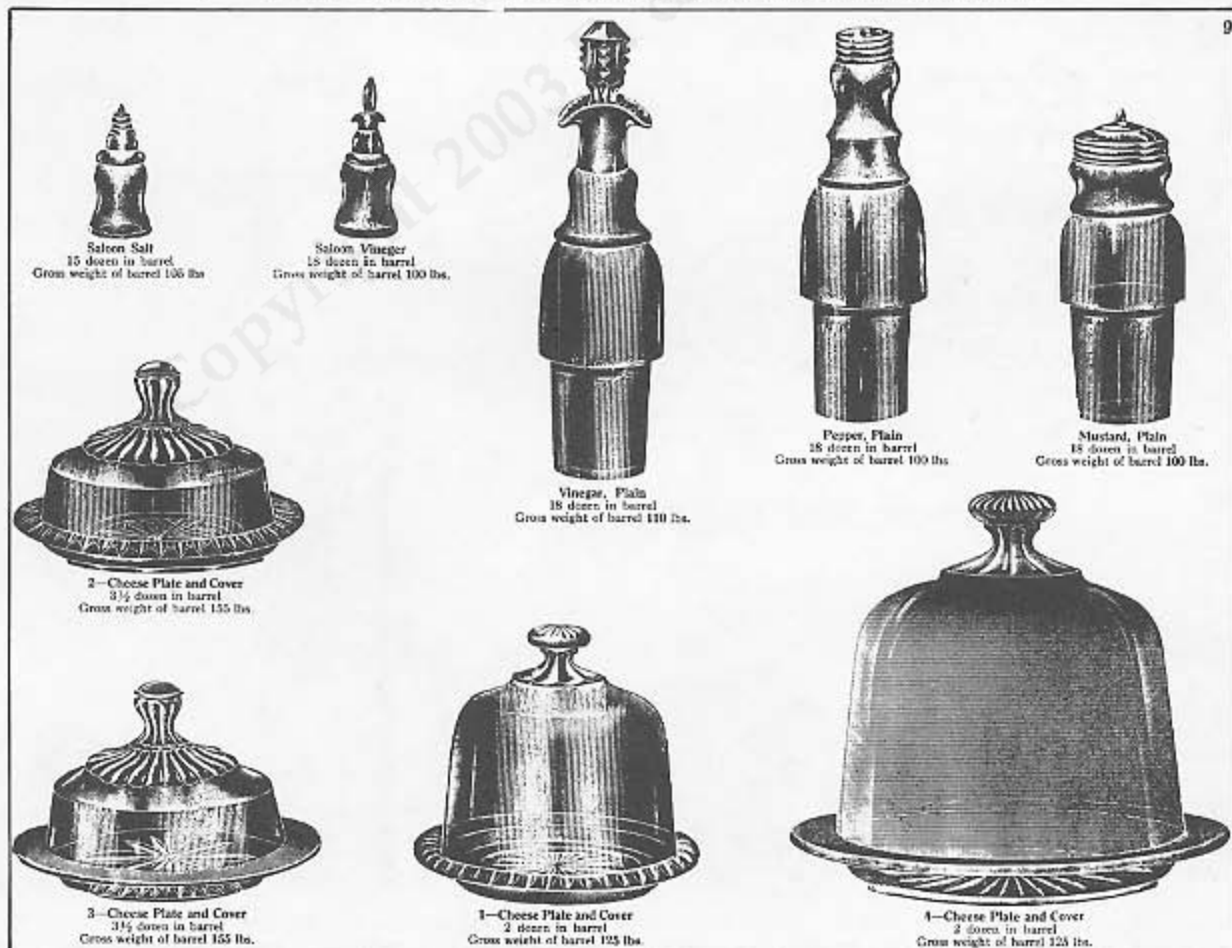


Spoon
10 dozen in barrel
Gross weight of barrel 144 lbs.



1/2 Gallon Jug
2 dozen in barrel
Gross weight of barrel 120 lbs.

CR-22 CO-OP'S SWAN pattern, a rather unusual name for a geometric imitation cut motif. The ruby and gold in this line is breathtaking.



Saloon Salt
15 dozen in barrel
Gross weight of barrel 100 lbs.

Saloon Vinegar
15 dozen in barrel
Gross weight of barrel 100 lbs.

Vinegar, Plain
15 dozen in barrel
Gross weight of barrel 110 lbs.

Pepper, Plain
15 dozen in barrel
Gross weight of barrel 100 lbs.

Mustard, Plain
15 dozen in barrel
Gross weight of barrel 100 lbs.

2—Cheese Plate and Cover
3 1/2 dozen in barrel
Gross weight of barrel 155 lbs.

3—Cheese Plate and Cover
3 1/2 dozen in barrel
Gross weight of barrel 155 lbs.

1—Cheese Plate and Cover
2 dozen in barrel
Gross weight of barrel 125 lbs.

4—Cheese Plate and Cover
2 dozen in barrel
Gross weight of barrel 125 lbs.

CR-23 Assortment of cheese dishes and plain bottles by Co-Op. The No. 3 Cheese Plate is shown in this book in ruby-stained.

T. M. ROBERTS COMPANY MINNEAPOLIS, MINNESOTA Wholesale Catalogue Circa 1898

WHITE GRANITE AND EARTHENWARE CUSPIDORES.



Earthenware Cuspidores.
No. 28. Earthenware Cuspidore, ribbed pattern. Extra high. Painted and decorated in assorted colors. Glazed inside.
Each \$.15
Fig. 14205b.

Earthenware Cuspidores.
No. 1. Earthenware Cuspidore. Standard shape. Hand painted in various colors. Glazed inside. A fine large cuspidore.
Each \$.19
Fig. 14205a.



Imported China Cuspidores.
No. 2679. Imported China Cuspidore. Swell Bottom. Heavy and not easily tipped over. Nicely decorated in floral designs in their natural colors.
Each \$.42
No. 2679.

Imported China Cuspidores.
No. 67267. Imported China Cuspidore. Finely glazed. Body color a beautiful shade of Deep Pink. Hand painted decorations with gold tracings. Extra heavy.
Each, \$.65
Fig. 14205e.

Imported China Vases.
SPECIAL NOTICE.
The following Vases are of the best Imported China-ware and must not be confounded with the cheap Bohemian Glassware listed by many other houses.
Fig. 14205f.

No. 130274. Imported Flower Vase, made of China, fancy hand painted; flower design with heavy gold handles and buttons; height 7 1/2 inches. Each \$.45
No. 67938. Imported Flower Vase, made of China. Surface is highly glazed. Body color is pretty shade of Pink. Hand painted floral design; height, 6 1/2 inches. Each \$.50
No. 36274.

No. 78927. Decorated China Vase. Best Imported Goods, highly finished surface. It is a painted Flower Design. Full Gold traced handles and edges. A small but delicate vase. Height, 6 inches. Each \$.55
No. 73969. Imported China Vase. Height 6 1/2 inches. Rich Royal Blue color; fancy gold handles and edges. Hand painted cherubs in natural colors. Each \$.60
No. 78927.

Imported China Vase.
No. 55972. This is the Gem of the lot. High Lemon Yellow Body. Fancy Gold Striped. Design exactly like our. Center-piece is a fine executed Design of Napoleon in different positions. Height, 9 1/2 inches.
Each \$.97
Fig. 14205h.

No. 769. Salt and Pepper Shakers, egg shaped, handsomely tinted and decorated; the latest pattern out; heavy nickel plated top. Each, \$0.25
Per dozen \$2.70
No. 1205. Salt and Pepper Shakers, the celebrated Tomato Pattern, is handsomely decorated and considered the prettiest shaker now in use. Price \$0.30
Fig. 14205j.

Imported China Vases. (Continued.) Fancy Tea Cups and Saucers.

Fig. 14205k.
No. 65979. Imported China Tea Cup and Saucer. Pure White, and heavy Gold Band. Very Neat and Chaste Design.
Price, one cup and one saucer... \$.15
Per dozen 1.97

Fancy Tea Cups and Saucers.
No. 19768. Fancy Imported China Tea Cups and Saucers. Beautiful painted Flower Designs. Gold traced handles and edges. A good sized cup and saucer. Price \$.25
Per dozen 2.75
Fig. 14205m.

No. 27356. Fancy Imported Tea Cups and Saucers. Fancy Piped Color Design. Gold Handles and Edges. Large size. A fine one at the price. Each \$.27
Per dozen \$3.90
Fig. 14205p.

No. 31286. Fancy Imported China Tea Cups and Saucers. Extra thin. Uniqueshape, beautiful and desirable article. Hand painted floral design. Gold Handles and Edges. As good an article as one would desire. Order half a dozen. Each, \$0.80; per dozen \$3.25
No. 14205n.

No. 26788. Imported Carlsbad China Cake Plates, perforated edges. Gold decorated Fancy Floral Centers; diameter from edge to edge, 8 1/2 inches. A good plate for the money.
Each \$.16
Per dozen 1.85
Fig. 14205g.

No. 99672. Genuine Imported French China Cake Plate. This plate is decorated in the same delicate manner that distinguishes all French China. Gold Edges. Diameter, 4 1/2 inches.
Each \$.30
Per dozen 3.60
Fig. 14205o.

No. 19728. Imported Carlsbad China Fruit Plate. Fancy Gold Striped shaded Edges. Beautiful painted Center figure. Diameter, 7 1/2 inches.
Each \$.50
Per dozen \$5.00
Fig. 14205q.

CUP, SAUCER AND PLATE.
No. 26793. Imported China cup, saucer and plate. A very dainty set consisting of one cup, one saucer and one plate; all large size. Decoration is a very pretty shade of pink and pale green. Design like our. Heavy fancy gold border. These sets are not to be confounded with the common trash usually sold at this price. Our price \$.45
Per dozen \$5.00
Fig. 14205l.

No. 27908. Imported porcelain picture frames; English make. Highly decorated with gold and colors in their natural colors. 4 1/2 inches and 6 inches. Size, 7 1/2 inches. Each \$.15
No. 27907. Imported porcelain picture frame; English make. This is similar to No. 27908, only it is much larger and is the square shape as our shows. Size, 8 1/2 inches. Each \$.57
Fig. 14205w.

No. 27908. Imported porcelain picture frames; English make. Highly decorated with gold and colors in their natural colors. 4 1/2 inches and 6 inches. Size, 7 1/2 inches. Each \$.15
No. 27907. Imported porcelain picture frame; English make. This is similar to No. 27908, only it is much larger and is the square shape as our shows. Size, 8 1/2 inches. Each \$.57
Fig. 14205w.

GLASSWARE DEPARTMENT. ALDEN PATTERN.

We offer this as the best cheap priced set manufactured. Style entirely new and original. A very good imitation of cut glass.
Fig. 14255a.



Alden pattern. Four piece table set as illustrated above.
Price \$0.42
Fig. 14255a.

Alden footed and covered bowls, size 7 inches diameter. Each \$.55
A 6 inch diameter. Each \$.34
Fig. 14255b.



Alden footed open bowls, size 7 inch diameter. Each \$.19
8 inch diameter. Each \$.23
Fig. 14255c.



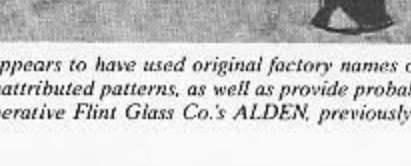
Alden Cake Servers, size 20 inch diameter. Each \$.19
11 inch diameter. Each \$.24
Fig. 14255d.



Alden Half-Gallon Pitcher. Each \$.23
Fig. 14255e.



Alden Berry Dish. Size 5 inches diameter. Each \$.23
Alden Berry Dish. 6 1/2 inches diameter. Each \$.30
Per doz \$ 3.60
Fig. 14255f.



Alden Salt and Peppers, nickel top. Size choice. Each \$.00
Per pair 1.0
Fig. 14255g.

This and the next five pages are from an 1898 T.M. Roberts catalogue. This Chicago based firm appears to have used original factory names on all their lines of table glassware, making it possible for us to name the manufacturers of a few previously unattributed patterns, as well as provide probable OMN's for others to whom origin had. Above right, and at the top left of the next page, is shown Co-Operative Flint Glass Co.'s ALDEN, previously known as SHEAF and BLOCK.

ALDEN PATTERN.—Continued.



Fig. 14285 H.—Footed Goblets.
Each..... \$.25
Per dozen..... 3.00

Alden Molasses Can, nickel plated top, each..... 1.25



MANHATTAN PATTERN.

This set is one of the best imitations of cut glass in the market. For a medium price set it cannot be equaled. Very neat design.

Fig. 14286.



Manhattan four-piece table set, as illustrated above.
Price..... 5.00

Fig. 14286 A.



Manhattan Plates.
8-inch diameter. Each..... .50
6-inch diameter. Each..... .15

Manhattan open-footed Bowls.
8-inch diameter. Each..... .50
7-inch diameter. Each..... .30

Fig. 14286 C.



Manhattan Vinegar or Oil Bottle, 5 oz., ground stopper, each..... 1.25

Fig. 14286 D.



Manhattan Oval Dish, size 7 inch, each..... 1.00
8 inch, each..... 1.50

Manhattan Molasses can, nickel plated top, each..... 1.25

Fig. 14286 E.



MANHATTAN PATTERN.—Continued.

Fig. 14286 F.



Manhattan Nappies, crimped top.
8-inch diameter. Each..... 1.50
7-inch diameter. Each..... 1.00

Manhattan Cake Salver, 10-inch. Each..... 1.00



Manhattan Goblets. Each..... 60
Per dozen..... 7.20

Fig. 14286 I.



Manhattan 1/4 pint Tumblers, ground bottoms. Each..... .25
Per doz..... 3.00

Fig. 14286 J.



Manhattan Salt and Peppers, nickel tops. State whether you wish for pepper or salt.
Each..... 60
Per pair..... 1.20

ATLANTA PATTERN.

This is one of the prettiest designs we carry. The engraving is very plain, yet effective. Any one desiring a medium price set can do no better for the money.

Fig. 14287.



Atlanta four-piece Table Set, as illustrated above.
Price..... 5.00

Fig. 14287 A.



Atlanta Cake Salver, diameter 9 inches. Each..... 1.50

Fig. 14287 B.



Atlanta Nappy. Bell shape.
7-inch diameter. Each..... 1.00
8-inch diameter. Each..... 1.25

ATLANTA PATTERN.—Continued.

Fig. 14287 C.



Atlanta footed Bowl, open diameter 8 inches. Each..... 1.50
Diameter 7 inches. Each..... 1.00

Fig. 14287 D.



Atlanta round Nappies, 5-inch diameter. Each..... .45
6-inch diameter. Each..... .30
7-inch diameter. Each..... .25

Fig. 14287 E.



Atlanta one-half gallon Jug or Pitcher. Each..... 2.50

Fig. 14287 F.



Atlanta Bread Plate, size 6-inch diameter. Each..... .25

Fig. 14287 G.



Atlanta Water-Bottle. Will hold about 6 pints. Each..... .75

Atlanta footed Goblet, 1/2 pint capacity. Each..... .40
Per doz..... 4.80

Fig. 14287 H.



Atlanta 1/4 pint Tumblers, ground bottoms. Each..... .20
Per doz..... 2.40

Fig. 14287 I.

Atlanta salt and pepper shakers, nickel tops. State whether you wish for copper or salt. Each..... .25
Per pair..... .50

Fig. 14287 K.



Atlanta Molasses Can, Nickel top. Large size. Each..... .75



Atlanta Oil or Vinegar Bottle, 5 oz. Ground stopper. Each..... .35

Fig. 14287 L.



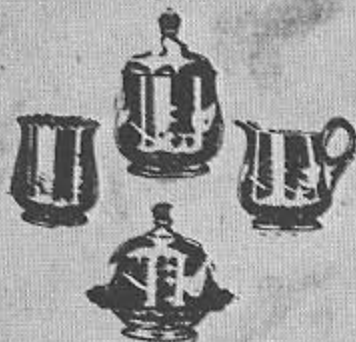
CR-25
On this page are shown Tarentum Glass Co.'s MANHATTAN and ATLANTA patterns. The latter has been popularly known as ROYAL CRYSTAL. Both of these OMN's have been previously proven by Kamm, Lucas and myself.

GLASS WARE—Continued.

Mandoline Pattern.

This is one of the best designs we carry, is a fine crystal free finished glass, beautifully engraved. It is much more superior to the pressed glass, as it is easier to keep clean.

Fig. 1423.



Mandoline four-piece Table Set, as illustrated above. Price..... \$10

Fig. 1423 A.



Mandoline footed and covered Bowl, 6-inch Diameter. Each..... \$10
7-inch diameter, Each..... \$10

Fig. 1423 B.



Mandoline footed open Bowl, 6-in. Diameter. Each..... \$10
8-inch diameter, Each..... \$10

Fig. 1423 C.



Mandoline footed Berry Dish, diameter 7 inches. Each..... \$10
8-inch diameter, Each..... \$10

Fig. 1423 D.



Mandoline Cake Holder, 9 inches diameter. Each..... \$10

Fig. 1423 E.



Mandoline half-gallon Jug or Pitcher. Each..... \$10

Fig. 1423 F.



Mandoline 1/2-pint footed Goblets. Each..... \$10
Per dozen..... \$100

MANDOLINE PATTERN—Continued.

Fig. 1423 G.



Mandoline One-third pint Tumblers, Ground glass bottom. Each..... \$10
Per dozen..... \$100

Fig. 1423 H.



Mandoline Molasses Can, nickel plated top. Each..... \$10

Fig. 1423 I.



Mandoline Salt and Pepper Shaker, Glass stopper, white or salt or pepper is desired. Each..... \$10
Per pair..... \$10

ALBANY PATTERN.

This is another of our Medium Priced sets. The design is plain and simple, and makes a good serviceable set.

Fig. 1423 J.



Albany Four-piece Table Set, as illustrated above. Price..... \$10
Per dozen..... \$100



Albany Footed and Covered Bowl, 6 inch diameter. Each..... \$10
7-inch diameter, Each..... \$10

Fig. 1423 K.



Albany Footed Bowl, 7 inches diameter. Each..... \$10
8-inch diameter, Each..... \$10

Fig. 1423 L.



Albany Cake Holder, 9 inches diameter. Each..... \$10
10-inch diameter, Each..... \$10

ALBANY PATTERN—Continued.

Fig. 1423 M.



Albany Bread Plate, 7 inches diameter. Each..... \$10

Fig. 1423 N.



Albany half-gallon Jug or Pitcher. Each..... \$10

Fig. 1423 O.



Albany footed Goblet, one-third pint. Each..... \$10
Per dozen..... \$100

Fig. 1423 P.



Albany One-third pint Tumblers, ground bottom. Each..... \$10
Per dozen..... \$100

Fig. 1423 Q.



Albany Oil or Vinegar Bottle, 4-in. ground stopper. Each..... \$10



Albany Molasses, nickel plated top. Each..... \$10

ROYAL PATTERN.

Hitherto we have carried the Royal Pattern in plain pressed pattern only. We are now carrying it in both the engraved and plain. The cuts we give are of the engraved. This set is a great favorite, on account of its unique design and heavy pattern.

Fig. 1423 R.



Royal four-piece Table Set, consisting of open holder, cover, green pitcher and better dish and cover. Price, engraved..... \$10
Pln. a plain pressed..... \$10

CR-26
Shown at the left and top center is Co-Operative Flint Glass Co.'s MADOLINE (here called MANDOLINE). At the bottom right and almost half of the next page picture this same firm's ROYAL pattern. Tarentum Glass Company advertised an ALBANY pattern in 1898, almost certainly the same as the one shown here in the middle and right column. I erred in calling this PRINCETON—another Tarentum OMN for a different pattern—on page 48 of the color section.

M. ROSENBERG'S PATENT FLINT GLASS MANUFACTURING CO. ESTD. 1872

ROYAL PATTERN—Continued.

Fig. 1431a. Royal footed and covered bowls, 6-inch diameter, plain pressed. Each..... 30
Pressed and engraved..... 35
Each bowl and cover, plain pressed..... 35
Pressed and engraved..... 40
Fig. 1431b. Royal footed bowls, no cover, 6-inch diameter, plain pressed. Each..... 30
Engraved and pressed..... 35
7-inch plain pressed..... 35
Each..... 35
7-inch engraved and pressed..... 34

Fig. 1431c. Royal covered Berry Bowl, 6-inch diameter, plain pressed. Each..... 30
Pressed and engraved..... 35
Each..... 35
Pressed and engraved..... 35

Fig. 1431d. Royal open Berry Bowl or Center, 6-inch diameter, plain pressed. Each..... 35
Engraved and pressed..... 40
Each..... 35
7-inch diameter, plain pressed..... 35
Plain and pressed..... 37

Fig. 1431e. Royal Cake Server, 10-inch diameter, plain pressed. Each..... 35
Engraved and pressed..... 45

Fig. 1431f. Royal Pattern half-gallon Juice or Pitcher, plain pressed. Each..... 37
Engraved and pressed..... 47

Fig. 1431g. Royal footed Goblets, one-half pint, plain pressed. Each..... 30
For dozen..... 36
Pressed and engraved..... 35
Each..... 35
For dozen..... 41.25

Fig. 1431h. Royal one-half pint Tumblers, plain pressed, round bottoms. Each..... 35
For dozen..... 35
Pressed and engraved..... 35
For dozen..... 40

Fig. 1431i. Royal Salt and Peppers, nickel top. (State whether you wish salt or peppers.) Each pressed..... 35
Engraved and pressed..... 35
Each..... 35
For pair..... 35

ROYAL PATTERN—Continued.

Fig. 1432. Royal Table Center, height to top of stem, 20 inches diameter, 14 inches. Contains six bottles, mustard sauce and one each salt and pepper cruet. Plain pressed. Each..... 35
Pressed and engraved..... 40
Each..... 40

IMPERIAL PATTERN.

Amber Stained Ware, Crystal and Amber Stained Glassware. It is impossible to describe our Imperial Pattern on paper, as it has to be seen to be appreciated. Amber coloring is put on in a most pleasing manner, and the price is very low for stained glassware.

Fig. 1433. Imperial amber and crystal footed and covered bowls, 6-inch diameter. Each..... 35
7-inch diameter..... 35

Fig. 1434. Imperial amber and crystal one-half pint Tumblers. Each..... 35
For dozen..... 35

Fig. 1435. Imperial amber and crystal one-half gallon Pitchers. Each..... 35

Fig. 1436. Imperial amber and crystal water bottles, capacity about 5 pints. Each..... 35

Fig. 1437. Imperial amber and crystal one-half pint Goblets. For dozen..... 35
Each..... 35

Fig. 1438. Imperial and amber crystal one-third pint Tumblers. Each..... 35
For dozen..... 35

IMPERIAL PATTERN—Continued.

Fig. 1439. Imperial amber and crystal covered Berry Bowls, 6-inch diameter. Each..... 35
7-inch diameter..... 35

Fig. 1440. Imperial amber and crystal open Berry Bowl, 6-inch diameter. Each..... 35
7-inch diameter..... 35

Fig. 1441. Imperial amber and crystal open Berry Bowls, 6-inch diameter. Each..... 35
7-inch diameter..... 35

Fig. 1442. Imperial amber and crystal open Berry Bowls, 6-inch diameter. Each..... 35
7-inch diameter..... 35

Fig. 1443. Imperial amber and crystal open Berry Bowls, 6-inch diameter. Each..... 35
7-inch diameter..... 35

Fig. 1444. Imperial amber and crystal open Berry Bowls, 6-inch diameter. Each..... 35
7-inch diameter..... 35

Fig. 1445. Imperial amber and crystal open Berry Bowls, 6-inch diameter. Each..... 35
7-inch diameter..... 35

Fig. 1446. Imperial amber and crystal open Berry Bowls, 6-inch diameter. Each..... 35
7-inch diameter..... 35

Fig. 1447. Imperial amber and crystal open Berry Bowls, 6-inch diameter. Each..... 35
7-inch diameter..... 35

Fig. 1448. Imperial amber and crystal open Berry Bowls, 6-inch diameter. Each..... 35
7-inch diameter..... 35

Fig. 1449. Imperial amber and crystal open Berry Bowls, 6-inch diameter. Each..... 35
7-inch diameter..... 35

Fig. 1450. Imperial amber and crystal open Berry Bowls, 6-inch diameter. Each..... 35
7-inch diameter..... 35

Why pay for your goods exorbitant prices when we offer you goods at 50 per cent less than your dealer does!

CR-27

Co-Operative Flint Glass Co.'s ROYAL and IMPERIAL patterns. The latter is better known as JEWELLED MOON AND STAR, but we are reinstating original names in this book where possible. CO-OP's IMPERIAL is known in amber-stained with "jewels" in blue and red, sometimes also with portions of the pattern frosted.

IMPERIAL PATTERN—Continued.

Fig. 1423a.



Imperial amber and crystal Oil or Vinegar Bottle, 6 oz. Each..... \$1

Fig. 1423b.



Imperial amber and crystal Molasses Can, nickel plated top, glass lip. Each..... \$3

Fig. 1423c.



Imperial amber and crystal Salt and Pepper Shakers, nickel plated tops. Slate which is wanted, salt or pepper cruets. Each..... \$3 For pair..... \$5

TABLE SETS. FORREST PATTERN.

Fig. 1426.



Ground body, with leaf pattern. Makes a very pretty set. Cream Pitcher, each..... \$7 Sugar and Covers, each..... \$5 Spoon Holder, each..... \$6 Butter Dish and Cover, each..... \$2 Four-piece set, consisting of above four pieces. Price..... \$25

Lyden Pattern.

Fig. 1427.



Fluting of ground glass, crimped tops, very plain, but curvilinear set. Cream Pitcher, each..... \$7 Sugar and Covers, each..... \$5 Spoon Holder, each..... \$6 Butter Dish and Cover, each..... \$2 Four-piece set, consisting of above four pieces. Price..... \$25

TABLE SETS—Continued.

Alladin Pattern.

This we consider the best set for the amount of money we have.

Fig. 1429.



Very best design of pressed glass, a very popular set. Sugar and Covers, each..... \$7 Cream Pitcher, each..... \$7 Spoon Holder, each..... \$6 Butter Dish and Cover, each..... \$2 Set, consisting of above named pieces. Price..... \$25

Oxford Pattern.

In offering this set we feel justified in saying that for the money you can not do better. Pattern is very pretty and wear is very heavy, and we do not hesitate in advising our customers to purchase this set in preference to others.

Fig. 1430.



Sugar and Covers, each..... \$7 Cream Pitcher, each..... \$7 Spoon Holder, each..... \$6 Butter Dish and Cover, each..... \$2 Set of four pieces, consisting of above four pieces. Price..... \$25

WINE, WATER AND LEMONADE SETS.

Pearl Pattern.

Fig. 1427L.



Pearl Pattern Water or Lemonade Set. Fancy pressed pattern. Set consists of one 15-inch tray, one half-gallon pitcher, two footed goblets and one tumbler. Price per set of five pieces..... \$25

FREIGHT RATES quoted upon application to any part of the United States, giving you the approximate cost of goods delivered at your station.

WATER AND LEMONADE SETS—Continued.

Pearl Pattern.

Fig. 1427L.



Pearl Pattern Water and Lemonade Set. Set consists of one 15-inch tray, one 1/2-gal. pitcher, two footed goblets and one tumbler. Price per set of five pieces..... \$25

Eulalia Pattern.

Fig. 1427.



Eulalia Pattern Water Set. Beautiful pressed pattern. Set consists of one 15-inch tray, one 1/2-gallon pitcher, two footed goblets and one tumbler. Price complete, five pieces..... \$25

Eulalia Pattern Wine Set.

Fig. 1427L.



Eulalia Pattern Wine Set most pleasing and popular design. Set consists of one decanter, one 15-inch tray and six footed wine glasses. Eight pieces as described. Price only..... \$25

Glass Trays.

Fig. 1427.



Eulalia Pattern Glass Trays has center design like set. Diameter of tray from edge to edge, 15 inches. Each..... \$5

CR-28
Other Co-Operative Flint Glass Co. patterns are included on this page, including their IMPERIAL, FORREST, PEARL and EULALIA. The last three are known today as IVY-IN-SNOW, DAISY & BUTTON—OVAL MEDALLION, and CURRIER AND IVES. EULALIA has been attributed, possibly incorrectly, to Bellaire Goblet Co., Findlay, Ohio. This book, however, presents some strong evidence that it is indeed a Co-Op line. The manufacturer of the OXFORD pattern at the center of the page was Tarentum Glass Co. It is known today as PANELLED TEARDROP. No maker can be proven on the remaining two patterns, LYDEN and ALLADIN, but Co-Op on the former and Tarentum on the latter would be a healthy guess.