



#### ILLINOIS

MFR: U. S. Glass Company state pattern

YOP: Introduced in 1897

NAME: OMN

OMN: No. 15052 pattern

AKA: STAR OF THE EAST (*Batty, fig. 260*)

REF: *BB, 8/1906*

*H5, pp. 40, 143*

*PGP3, pp. 11, 12; PGP5, p. 8*

*PetSal, 163-U*

*PG, p. 141 (CATA)*



11- ILLINOIS pattern individual open salt

#### IMPERIAL NO. 4

See LACE BAND



12- IMPERIAL NO. 47 pattern gas shade

#### IMPERIAL NO. 47

MFR: Imperial Glass Co., Bellaire, Ohio

YOP: Circa 1901-1910

NAME: OMN

OMN: The shades were originally numbered "047", the pitcher shown in *K7* is called number "75"

REF: *IG, pp. 20, 30, 31; K7, pl. 86*

NOTE: ruby-stained glass shade pictured

#### INDIANA

MFR: U.S. Glass state pattern

YOP: Introduced in 1897

NAME: OMN (*LVG, pl. 39*)

OMN: No. 15029 pattern

AKA: PRISON WINDOW (*PetSal, p. 169-J*)

REF: *K4, p. 105*

NOTE: This pattern is rare in ruby-stained. Indiana Tumbler & Goblet Co., Greentown, Ind., used the name INDIANA for the pattern known today as CORD DRAPERY.



13- INDIANA pattern slat shaker



14- INNA pattern spooner and water pitcher

**INNA**

MFR: Paden City Glass Mfg. Co.

YOP: Circa 1916 to 1920's

NAME: *Barnett, p. 37*

OMN: No. 199 line

AKA: CLASS ACT (error in *H6, p. 92*)REF: *H6, p. 92 (CATA)**PGP3, p. 2; PGP6, p. 14*

REPROs: Many in colored glass, by Viking Glass Co., 1960's, which acquired many Paden City molds when the firm closed

NOTE: The items here indicate that some ruby-stained pattern glass was still being made after 1915. The TREE pattern, also by Paden City, is known in ruby-stained. However, both are rare in this color. The glass has a greyish cast, and the stain is not of superior quality.

**INSIDE RIBBING**

MFR: Beaumont Glass Co., Martins Ferry, Ohio

YOP: Circa 1899-1901

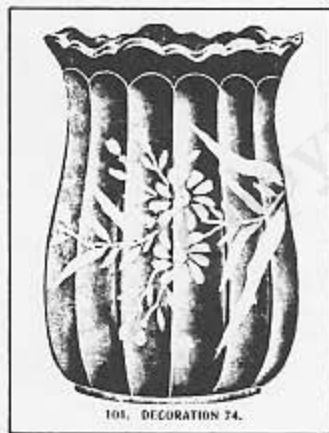
NAME: K8, p. 37

AKA: PRESSED OPTIC (*H1, Fig. 215*)

OMN: Beaumont's No. 101 line

REF: *OPG, pp. 83-85*

NOTE: The ruby-stained examples of this pattern are rare and usually have enamel floral decoration, typical of other Beaumont decorated ware. This was one of the first patterns made after Beaumont began to actually make and decorate their own glass, after three years as a decorating firm only.



15—INSIDE RIBBING celery vase from 1899 Beaumont Glass Company advertisement

**INTERLOCKING CRESCENTS** (*Md1, pl. 113*)

See DOUBLE ARCH

**INVERNESS** (*Md2, pl. 130*)

See CAROLINA

**INVERTED STRAWBERRY** (and VARIANT)

MFR: Possibly Cambridge Glass Co., Cambridge, Ohio

YOP: Circa 1912-18

NAME: *Md2, pl. 48*

OMN: No. 2780 STRAWBERRY?

AKA: LATE STRAWBERRY VARIANT (*BRS, pl. 14, row 2*)REF: *Welker 2, p. 100 (CATA)**Metz1, p. 89; Metz2, p. 64**PGP6, p. 9*

NOTE: The same tumbler is shown here from two different sides. This example is slightly different from the Cambridge table line, having a collar foot, and the tumbler's capacity "8 AV. OZ" on the side. This tumbler may be Cambridge, or a copy of one of their best-selling designs by Westmoreland, but it was advertised by Butler Bros. as a souvenir tumbler in 1915. Reproduction tumblers in r.s. have a purplish staining which easily is scratched, and have a small letter B along the rim near the base which is sometimes hard to find.



16—Two different views of INVERTED STRAWBERRY (Variant) tumbler with embossed mark "8 AV. OZ."

**IVY-IN-SNOW**  
See FORREST