



WAFFLE AND FINE CUT (*K2, p. 99*)
See ORION

WARD'S NEW ERA (*K5, p. 80 and pl. 6*)
See TWENTIETH CENTURY

WASHINGTON

MFR: United States Glass Co. "state" pattern
YOP: Circa 1904-1910
NAME: OMN (*U2, p. 249*)
OMN: No. 15074 line
AKA: BEADED BASE (*Gaddis*)
REF: *OPG, pp. 146-147* (1910 CATA)
PG, p. 148 (CATA)



W1—WASHINGTON state pattern cordial



W2-W5—WASHINGTON pattern celery tray,
milk pitcher, tumbler and water pitcher

WELLINGTON

FIG: 882-883 (Page 63)
MFR: Westmoreland Specialty Co., Grapeville, Pa.
YOP: Circa 1903-1912
NAME: *K5, pl. 34* (1903 MW CATA)
AKA: STAPLE
OMN: No. 400 line
REF: *WSC, p. 57*

12/26/1903 CG&L (partial)
[At Westmoreland] Specialty Co.'s works, Grapeville, Pa., . . . during the holidays. Besides their [line of] specialties, they are getting out a new [table pattern which] will be placed on the market after the first of the

year. It is in imitation cut and will be known as the "400." [WELLINGTON]

1/7/1904 C&GJ

The Westmoreland Specialty Co. show one new line, the "400" in crystal, ruby and gold—also some new plates for the St. Louis Fair. . . .



W6—WELLINGTON pattern covered butter



W7—WELLINGTON pattern toothpick holder



W8-W9—WELLINGTON pattern tumbler and water pitcher

WELLSBURG

MFR: National Glass at their Dalzell, Gilmore & Leighton plant, Findlay, Ohio
 YOP: Circa 1901
 NAME: *Smith FPG*, pp. 20, 69, 114
 AKA: NATIONAL NO. 681 (*K5*, p. 63)
 OMN: Unknown
 REF: *K5*, pl. 5 (AD)
1000TPH., Fig. 647



W10—WELLSBURG toothpick holder which was not made at National's Wellsburg factory (Riverside) but at the Findlay factory

WESTMORELAND'S NO. 15

MFR: Westmoreland Specialty Co., Grapeville, Pa.
 YOP: Circa 1893 to 1905
 NAME: *CG1*, pp. 87-90
 OMN: No. 15 line
 AKA: CUT LOG (*Md1*, pl. 30)
 PIONEER'S NO. 15 (*K3*, p. 94)
 REF: *LVG*, pl. 53
CG2, p. 7
Spillman, Fig. 311
Metz1, pp. 140-143

NOTE: This is a copy of a Bryce, Higbee line known by most as CUT LOG (see *CG1*, pp. 87-90). Perhaps this Westmoreland copy should be called CUT LOG and the earlier version by Bryce, Higbee & Co., ETHOL (its OMN). Unfortunately, this would prove too confusing for a pattern whose OMN has been known, but virtually ignored, despite Kamm's excellent catalogue reprint (*K8*, pls. 55-57). Despite the fact that the Pioneer catalogue shows the line in ruby stain, I have yet to confirm the existence of this pattern in r.s. Some shapes, i.e. the two different cruets and the tiny individual salt, were never made by Bryce, Higbee.



W11—WESTMORELAND'S NO. 15, a copy of the popular ETHOL (better known as CUT LOG) made earlier by Bryce, Higbee and Co. This illustration was taken from the circa 1893 Pioneer Glass Co. reprint, as no actual example has yet to be reported for confirmation

WESTON

MFR: Robinson Glass Co., Zanesville, Oh.
 YOP: Circa 1896-99
 NAME: *LVG*, pl. 39
 OMN: No. 123 pattern
 REF: *PGP6*, p. 21

RU/TP, Fig. 1195 (RETORT tp)
 NOTE: A copy of, and frequently confused for, RETORT pattern, by Dalzell, Gilmore & Leighton. Both of these firms joined National in 1900.

1/15/1896 CG&L

The Robinson Glass Co.—Edwin Robinson is in charge of room 110, and shows two new sets of tableware which are especially remarkable for the high quality of bright, pellucid crystal glass and its uniformity in all the hundreds of samples shown. Their new No. 123 [WESTON] is a full line of tableware, with plain surface enough between their cut figures to show off both figure and the quality of the metal to excellent advantage. Their No. 129 [??] is a imitation cut pattern, finely executed. A full line of pressed and blown bar goods, vases, tankards and novelties complete the sample room exhibit, only a few samples of their former patterns being shown. . . .



W12—WESTON pattern covered butter

WIDMER

MFR: Probably Beaumont Glass Co., Martin's Ferry, OH
 YOP: Circa 1902-1903
 NAME: *RU/TP*, Fig. 1134
 OMN: Unknown
 NOTE: Made from retooled molds of Beaumont's COLUMBIA. Known in a complete set, primarily in enamel decorated clear, but a few pieces in ruby-stained have been confirmed.



W13—WIDMER pattern toothpick holder, made from the discontinued molds formerly used on Beaumont Glass Co.'s COLUMBIA

WIGWAM, HEISEY'S

MFR: A. H. Heisey & Co., Newark, Ohio

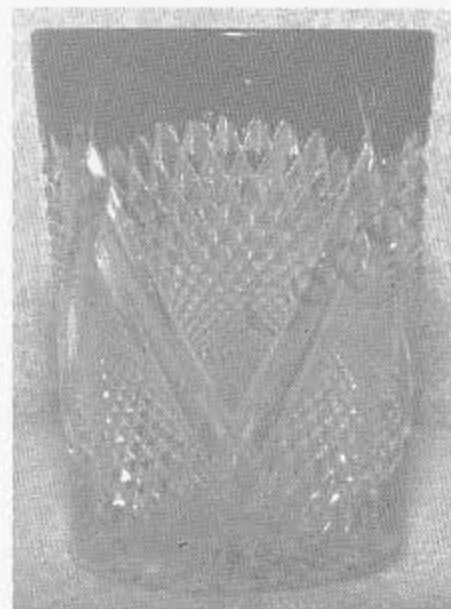
YOP: Introduced in 1905

NAME: *Heisey News*

OMN: No. 124 tumbler

REF: *Vogell, p. 3*

NOTE: Only the tumbler is known in this attractive imitation cut pattern. Do not confuse for a different pattern carrying the same name, listed in K8, p. 11.



W14—WIGWAM pattern tumbler by A.H. Heisey & Co. No matching pitcher was made for this novelty tumbler.

WIMPOLE

FIG: 885-886

MFR: Unknown

YOP: Circa 1896-1905

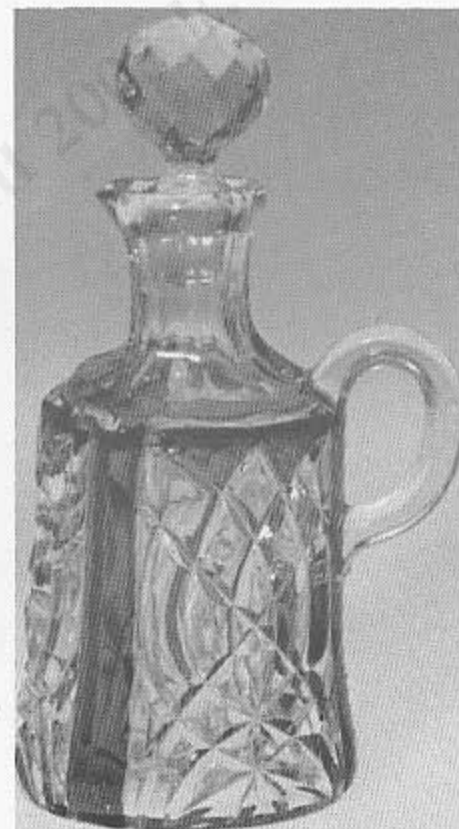
NAME: H6, p. 17

OMN: Unknown

NOTE: A perfect example of two different shades of staining appearing on the same pattern, probably from different formulas used by different decorating firms



W17—WIMPOLE pattern covered sugar



W16—WIMPOLE pattern large cruet or catsup decanter



W15—WIMPOLE pattern covered butter maker unknown

WINGED SCROLL VARIANT

MFR: Jefferson Glass Co., Follansbee, WV

YOP: Circa 1910-15

AKA: JEFFERSON FLEUR-DE-LIS (H4, Fig. 395)

IVORINA VERDE (design copy discussed in *PetPat, pp. 95-96*)

NOTE: Only the puff box and hair receiver and a small covered trinket box are known in this Jefferson copy of a well-known tableware pattern by A.H. Heisey & Co.



W18—WINGED SCROLL VARIANT (JEFFERSON FLEUR-DE-LIS) hair receiver by Jefferson Glass Co.



W19—WINGED SCROLL VARIANT puff box, also by Jefferson

BEADED LOBE

(Misnomer: WINONA)

MFR: Brilliant and Greensburg Glass Co., probably at latter location

YOP: circa 1888 to 1893

NAME: *PetSal*, p. 22-J

AKA: WINONA (probable error *K3*, p. 135)

OMN: No. 200 pattern

REF:

NOTE: Kamm seems to have be confused calling this pattern WINONA in her Book 3. The catalogue reprint shown here offers no original name for the line. Kamm states it was also referred to as Greensburg's No. 200. However, an ad from the Brilliant firm, from which the Greensburg firm developed, reprinted in *K5*, pl. 29 clearly shows the pattern BARRED HOBNAIL originally carried the name WINONA. See also *K8*, pl. 65, where the salt shaker in this second line is called WINONA. Peterson shows a salt shaker in this, calling it BEADED LOBE.



W20—BEADED LOBE tumbler, which Kamm seems to have incorrectly called WINONA in her Book 3. This error was found too late to re-alphabetize to the Peterson name

W21-W22—Reprinted here are two particularly important advertisements from 1893 and 1906 *China, Glass & Lamps*. Above is shown the SPECIALTY pattern, which may or may not be the same as the DAGGER tankard pitcher. Below, from 1906, is an ad showing the No. 1906 PEERLESS pattern by Tarentum, which was incorrectly called No. 1900 on page 171 of this book. The trade journal quoted there, or perhaps this advertisement, may have been a misprint. There is, however, no question that PEERLESS was the OMN for the pattern popularly called FROST CRYSTAL

SPECIALTY GLASS CO.,

EAST LIVERPOOL, OHIO.



Tableware and Novelties.

Tarentum Glass Co.,

MANUFACTURERS OF

Pressed Glassware,

Tarentum, Pa.



WE MAKE A FULL LINE OF THIS PATTERN.

Exhibit at Monticello House, Pittsburg, in Charge of J. A. Harris