



ZANESVILLE

MFR: Robinson Glass Co., Zanesville, Ohio,
with additional production after National
merger at their McKee & Bros. factory
YOP: 1895 to 1903

NAME: *PetPat*, p. 221 (1895 AD)

OMN: No. 122 pattern (by both factories)

AKA: ESTHER (misnomer—*BRS*, pl. 12,
top row #1)

REF: *H6*, p. 66 (McKee/Natl CATA)

ZIPPER SLASH

FIG: 332-337, 339-341 (Page 39)

MFR: Geo. Duncan's Sons & Co., Washing-
ton, Pa.

YOP: Introduced in 1893

NAME: *K8*, p. 83

OMN: No. 2005 pattern

AKA: McKee's No. 15M (a copy in stemware)

REF: *K6*, pl. 55 (1893-94 AD)

RU/TP, Fig. 233 (amber-stained)

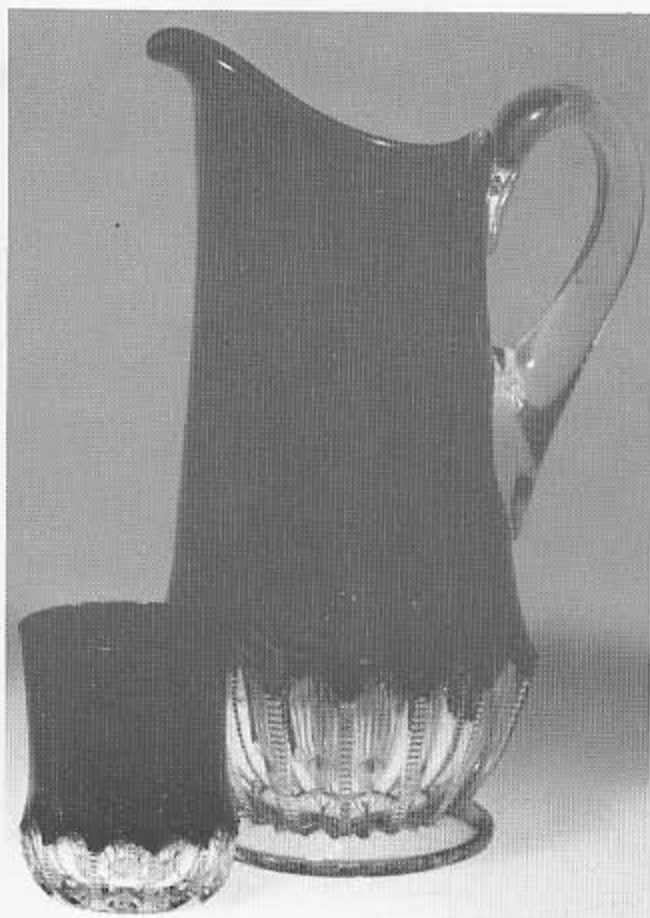
Stout, p. 410 (McKee copy)

NOTE: This pattern is frequently found with
a frosted body with an extremely lovely
amber-stained gravevine band surrounding
each piece.

ZIPPERED BLOCK

FIG: 286-294

MFR: George Duncan & Sons, Pittsburgh,
Pa., with production continued by U.S. Glass
after 1891 merger



Z1-Z2—ZIPPER SLASH pattern tumbler and
pitcher



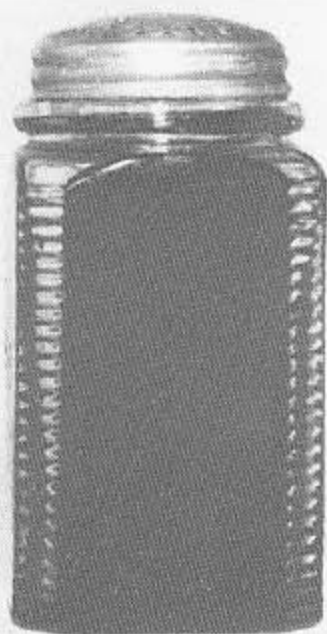
Z3-Z4—ZIPPERED BLOCK pattern tumbler
and pitcher

YOP: circa 1890-1898
 NAME: K3, p. 131 (CATA)
 OMN: Duncan's No. 90 line
 AKA: CRYPTIC (*Id2*, pl. 123)
 REF: *Revi*, p. 149 (CATA)
Revi, p. 148 (Patent Illustration)
 NOTE: Kamm reports at least 40 different shapes in this line, including five different lamps.

ZIPPERED CORNER

MFR: Uncertain—Probably National at Cambridge
 YOP: Circa 1888-1905
 NAME: *PetSal*, p. 177-J
 OMN: Unknown
 AKA: ZIPPERED BORDERS (*H3*, Fig. 337)
 REF: *GC6*, p. 43
Bennett, p. 37

NOTE: Cambridge Glass Co. may have made this from old Northwood molds, as the salt shaker in *PetSal* is in a cased Vasa Murrhina color which Northwood Glass Works called "Royal Silver".



Z6—ZIPPERED CORNER pattern salt shaker, which may or may not be the same pattern as the syrup shown before. This may be a design copy.

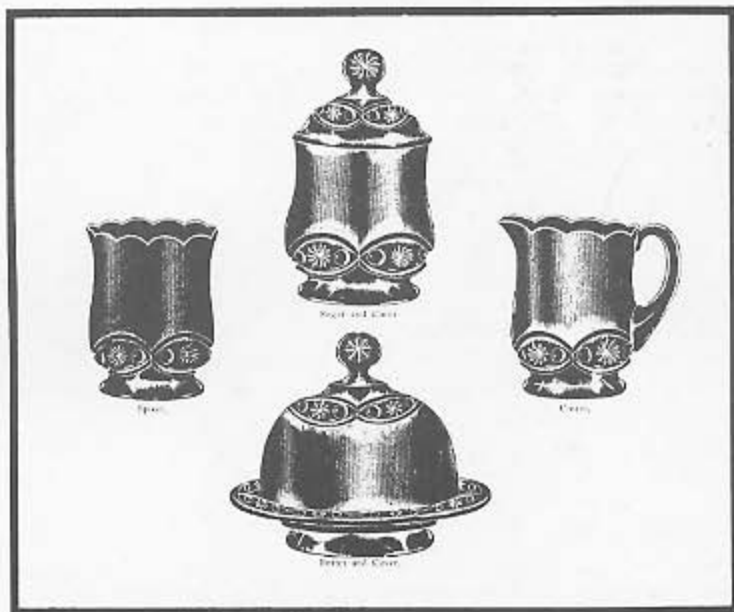
ZIPPERED SWIRL AND DIAMOND (H5, Fig. 247)
 (See SWIRL AND DIAMOND)



Z7—SWIRL AND DIAMOND covered sugar which both *Revi* and I altered slightly to the name ZIPPERED SWIRL AND DIAMOND. However, in an effort to reinforce priority, the information for this pattern can be found under the earlier Kamm name



Z5—ZIPPERED CORNER pattern syrup pitcher. This pattern closely matches on Peterson shows in a cased Vasa Murrhina salt shaker, the color of which seems to be that found in Northwood's ROYAL SILVER line. Perhaps Cambridge got the molds for this from National's Northwood factory at Indiana, Pa., as they did for those on Northwood's CRYSTAL QUEEN pattern



Z8—ZANESVILLE pattern table set reprinted from circa 1902 McKee-National catalogue